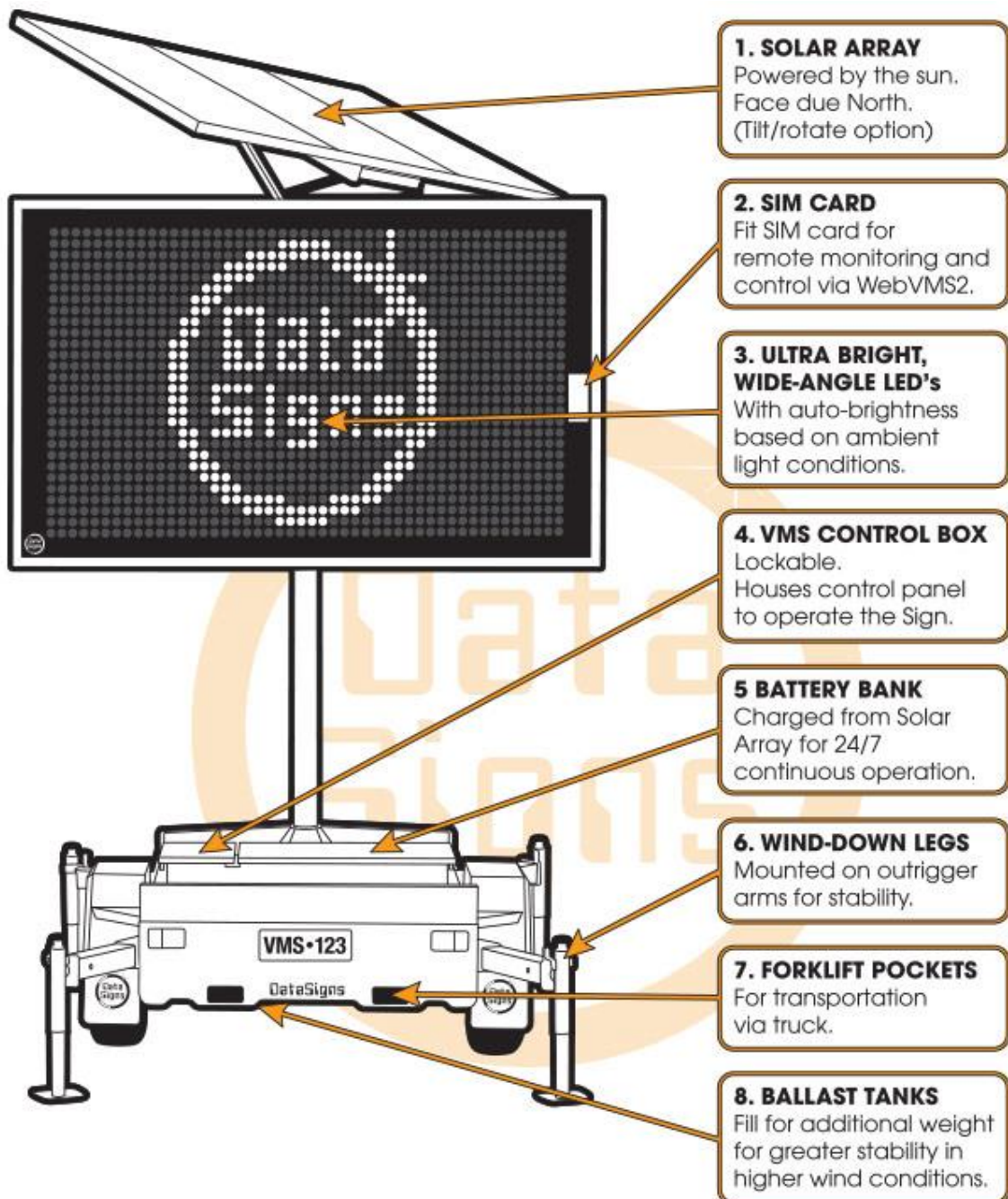


Some basic information on our Data Signs Message Boards. Please contact us for further information or application requirements.



The solar tilt/rotate system developed by Data Signs, allows the operator to tilt and rotate the solar array to the optimal angle and heading to capture the most sunlight each day. By rotating the bottom edge of the solar array to face due north and tilting the solar array slightly for summer and more for the winter season, the amount of sunlight hitting the solar array each day increases and helps keep the batteries charged (subject to environmental conditions).

