

600 SERIES TELESCOPIC BOOM LIFTS

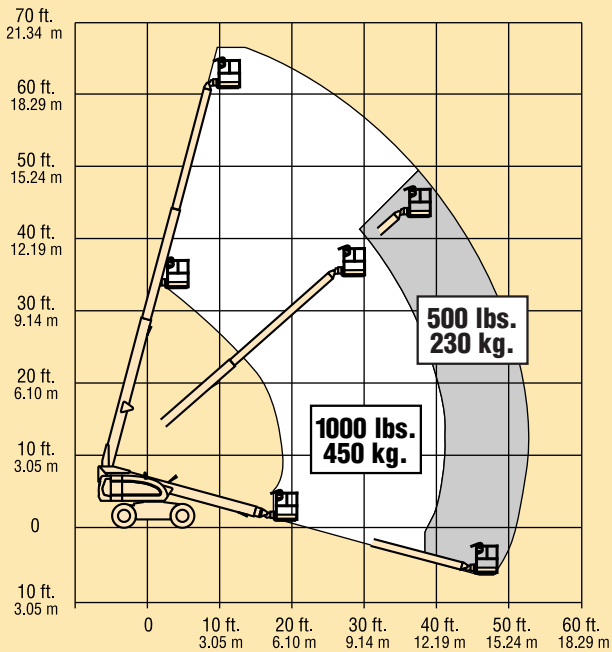


600S, 600SJ & 660SJ

www.jlg.com

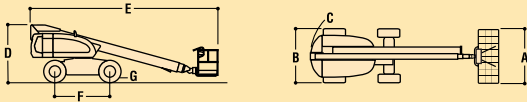


JLG 600S



REACH SPECIFICATIONS

Platform Height	60 ft. (18.29 m)
Horizontal Outreach	49 ft. 6 in. (15.09 m)
Swing	360 Degrees Continuous
Platform Capacity—Restricted	500/1000 lbs. (230/450 kg)
Platform Capacity—Unrestricted	500 lbs. (230 kg)
Platform Rotator	160 Degrees Hydraulic



DIMENSIONAL DATA

A. Platform Size	36 in. x 72 in. (0.91 m x 1.83 m)
B. Overall Width	8 ft. in. (2.44 m)
C. Tailswing (working condition)	3 ft. 9 in. (1.14 m)
D. Stowed Height	8 ft. 5 in. (2.57 m)
E. Stowed Length	27 ft. 11 in. (8.51 m)
F. Wheelbase	8 ft. 1 in. (2.46 m)
G. Ground Clearance	12 in. (30 cm)
Gross Vehicle Weight	22,500 lbs. (10,208 kg)
Max. Ground Bearing Pressure	60 psi (4.2 kg/cm ²)
Max. Tire Load	11,800 lbs. (5,351 kg)

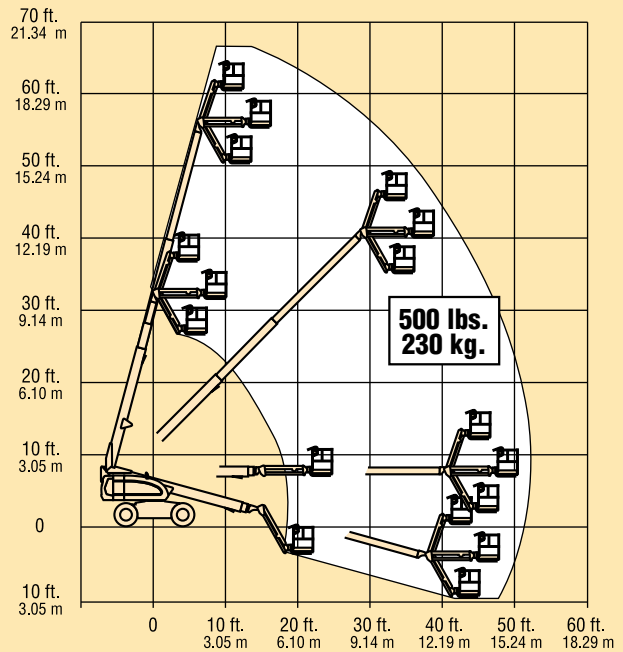
CHASSIS

Drive Speed 2WD	4.5 MPH (7.2 kph)
Drive Speed 4WD	4.0 MPH (6.4 kph)
Gradeability 2WD	30%
Gradeability 4WD	45%
Tires	.15 x 19.5 Lug Tread
Axle Oscillation (optional)	.8 in. (20.4 cm)
Turning Radius, (Inside/Outside)	
600S 2WS	.12 ft. (3.66 m)/17 ft. 9 in. (5.41 m)
600S 4WS	.5 ft. 5 in. (1.65 m)/11 ft. 4 in. (3.45 m)

POWER SOURCE

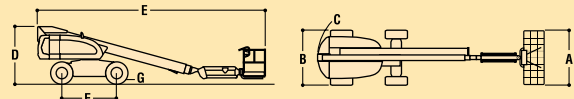
Dual Fuel Engine, Ford LRG-425	.82 hp (61 kW)
Diesel Engine, Deutz F4M1011F	.65 hp (48 kW)
Fuel Tank Capacity	.39 gallons (147.6 L)
Hydraulic Reservoir	.31 gallons (117.3 L)
Auxiliary Power	.12V DC

JLG 600SJ



REACH SPECIFICATIONS

Platform Height	60 ft. (18.29 m)
Horizontal Outreach	50 ft. 4 in. (15.34 m)
Swing	360 Degrees Continuous
Platform Capacity—Restricted	500 lbs. (230 kg)
Platform Capacity—Unrestricted	500 lbs. (230 kg)
Platform Rotator	180 Degrees Hydraulic
Jib (Range of Articulation)	.130 Degrees (+70, -60)



DIMENSIONAL DATA

A. Platform Size	36 in. x 72 in. (0.91 m x 1.83 m)
B. Overall Width	8 ft. in. (2.44 m)
C. Tailswing (working condition)	3 ft. 9 in. (1.14 m)
D. Stowed Height	8 ft. 5 in. (2.57 m)
E. Stowed Length	31 ft. (9.45 m)
F. Wheelbase	8 ft. 1 in. (2.46 m)
G. Ground Clearance	12 in. (30 cm)
Gross Vehicle Weight	25,000 lbs. (11,343 kg)
Max. Ground Bearing Pressure	62 psi (4.4 kg/cm ²)
Max. Tire Load	12,400 lbs. (5,624 kg)

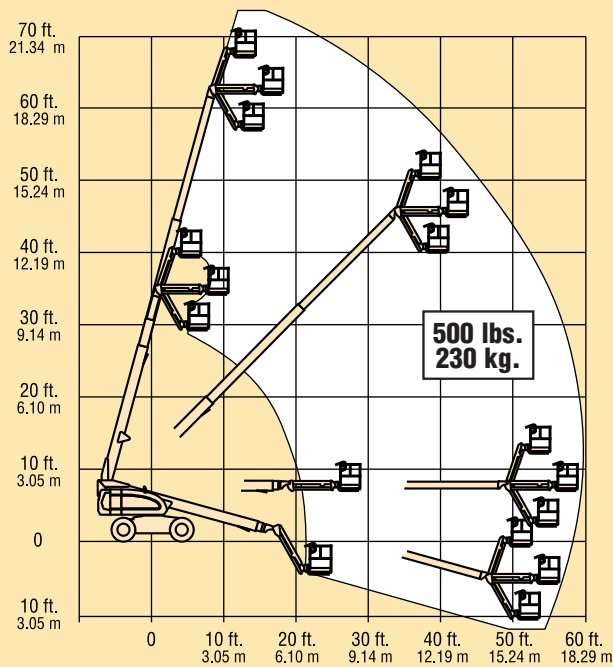
CHASSIS

Drive Speed 2WD	4.5 MPH (7.2 kph)
Drive Speed 4WD	4.0 MPH (6.4 kph)
Gradeability 2WD	30%
Gradeability 4WD	45%
Tires	15 x 19.5 pneumatic
Axle Oscillation (optional)	.8 in. (20.4 cm)
Turning Radius, (Inside/Outside)	
600SJ 2WS	.12 ft. (3.66 m)/17 ft. 9 in. (5.41 m)
600SJ 4WS	.5 ft. 5 in. (1.65 m)/11 ft. 4 in. (3.45 m)

POWER SOURCE

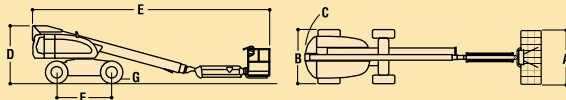
Dual Fuel Engine, Ford LRG-425	.82 hp (61 kW)
Diesel Engine, Deutz F4M1011F	.65 hp (48 kW)
Fuel Tank Capacity	.39 gallons (147.6 L)
Hydraulic Reservoir	.31 gallons (117.3 L)
Auxiliary Power	.12V DC

JLG 660SJ



REACH SPECIFICATIONS

Platform Height	66 ft. (20.12 m)
Horizontal Outreach	56 ft. 9 in. (17.3 m)
Swing	360 Degrees Continuous
Platform Capacity—Restricted	500 lbs. (230 kg)
Platform Capacity—Unrestricted	500 lbs. (230 kg)
Platform Rotator	180 Degrees Hydraulic
Jib (Range of Articulation)	130 Degrees (+70, -60)



DIMENSIONAL DATA

A. Platform Size	36 in. x 72 in. (0.91 m x 1.83 m)
B. Overall Width	8 ft. (2.44 m)
C. Tailswing (working condition)	3 ft. 9 in. (1.14 m)
D. Stowed Height	8 ft. 5 in. (2.57 m)
E. Stowed Length	33 ft. 6 in. (10.21 m)
F. Wheelbase	8 ft. 1 in. (2.46 m)
G. Ground Clearance	12 in. (30 cm)
Gross Vehicle Weight	27,500 lbs. (12,477 kg)
Max. Ground Bearing Pressure	69 psi (4.9 kg/cm ²)
Max. Tire Load	13,200 lbs. (5,986 kg)

CHASSIS

Drive Speed 2WD	4.5 MPH (7.2 kph)
Drive Speed 4WD	4 MPH (6.4 kph)
Gradeability 2WD	30%
Gradeability 4WD	45%
Tires	Lug Tread, 15 x 19.5
Axle Oscillation (optional)	8 in. (20.4 cm)
Turning Radius, (Inside/Outside)	
660SJ 2WS	12 ft. (3.66 m)/17 ft. 9 in. (5.41 m)
660SJ 4WS	5 ft. 5 in. (1.65 m)/11 ft. 4 in. (3.45 m)

POWER SOURCE

Dual Fuel Engine, Ford LRG-425	82 hp (61 kW)
Diesel Engine, Deutz F4M1011E	65 hp (48.5 kW)
Fuel Tank Capacity	39 gallons (147.6 L)
Hydraulic Reservoir	31 gallons (117.3 L)
Auxiliary Power	12V DC

PERFORMANCE FEATURES



Controls Designed for Ease of Operation

Platform Control Console. Layout of controls and a 40% reduction in the number of switches and levers provides ease of operation and reduces the time required for operator training. Durable cast aluminum console box is shaped for operator convenience and provides added protection against damage to internal components. One-hand drive and steer provides optimum travel control, while one-hand control of lift and swing provides for more efficient and more accurate positioning of the basket to the elevated work location. A console light panel informs the operator of various condition sensors such as fuel level, engine or filter distress, platform capacity, tilt warning, and function enable status. Easy-to-replace console decals feature large, colorful, easy-to-identify graphic symbols.



Ground Control Console.

Ground control console features three-dimensional decal. A detailed light panel provides status of specified machine conditions, including various self diagnostic maintenance sensors. Ground control console is conveniently located at eye level.



Improved Platform Designed for Ease of Repair and Operator Convenience

Rugged platform design features high strength* square tube steel railing. Constructed of five individually replaceable sections, the entire platform, or just a single section, can be readily replaced. Low mounting of the platform to the boom nose reduces overhanging components which could cause damage to sensitive objects such as an aircraft fuselage. Reduced ground level step-in entry heights and a swinging platform gate permit ease of entry and exit while carrying tools. Sealed hydraulic platform rotator features 180 degrees** range of motion. Dual capacity rating of 500 lbs. (230 kg) unrestricted and 1000 lbs. (450 kg) restricted (under ANSI A92.5 in USA only) permits increased job site efficiency.

*50,000 psi yield strength steel alloy.

**160 degrees on model 600S.

PERFORMANCE FEATURES



Advanced Boom Design Features a Covered Power Track

Constructed of high yield strength steel*, the boom features a larger cross sectional area to improve resistance to deflection. Telescoping mid-section and fly-section feature fully synchronized cable extend system with corrosion resistant composite sheaves. Boom wear pads, cables, sheaves, pins, and bearings require no lubrication. Improved wear pad design provides much larger bearing surfaces and longer service life, with external access to shimming for adjustment. A one-piece composite material cover provides added protection against damage to the power track, hoses, and cables.

*100,000 psi yield strength steel alloy.



Turntable Designed for Ease of Service

Gull-wing hoods are constructed of non-corroding composite material and provide full access to all engine components. Swing-out engine tray provides full access to both sides of the engine, allowing service personnel to work in a convenient, walk-in position. A modular valve manifold consolidates all hydraulic valves and service ports to one location. Convenient access is provided to fuel and hydraulic oil fill ports. All air and oil filters are readily accessible. Bolt-in swing drive system provides ease of backlash adjustment.

Improved Articulating Jib Available on Two Models

Models 600SJ and 660SJ feature new and improved articulating jibs. A wider range of motion (+70 degrees to -60 degrees relative to the main boom) permits greater reach versatility in the immediate vicinity of the elevated work site. The new articulating jib is compatible with both 36 x 72 in. (0.9 x 1.83 m) and 36 x 96 in. (0.9 x 2.44 m) platforms.



Improved Oscillating Axle Option

Lock-out of the oscillating axle cylinders to form a rigid chassis does not occur until the superstructure swings 40 degrees either side of center line; an improvement from 10 degrees on previous models.



Standard Features

36 x 72 in. (0.91 x 1.83 m)
Low Mount Platform
Inward Swing Gate
180 Degree Hydraulic Platform Rotator¹
Platform Console Machine Status Light Panel²
110V-AC Receptacle in the Platform
5 Degree Tilt Alarm/Indicator Light
Oscillating Axle
15 x 19.5 Rim Protector Lug Tread Tires
Swing-Out Engine Module
Gull-Wing Engine Hood
12V-DC Auxiliary Power
Proportional Controls
Lifting/Tie Down Lugs
Hourmeter
Horn

1. 160 degrees on the 600S.
2. Provides indicator lights at platform control console for system distress, low fuel, 5 degree tilt light, and foot switch status.

Available Options

36 x 96 in. Platform¹
Platform Work Lights
1/2 in. Air Line to Platform²
Soft Touch System 6 ft./8 ft.
Welding Leads to Platform³
Oxy/Acetylene Line²
15 x 19.5 Foam-Filled Tires
2500W Generator
Head & Tail Lights
Tow Package⁴
Wheel Covers
Travel Alarm
All Motion Alarm
Flashing Amber Beacon
43.5 Propane Tank
Cold Weather Start Kit (Ford)/(Deutz)⁵
Hostile Environment Kit⁶
Engine Tray Hand Crank
Four Wheel Steer
Bolt On Lifting Lugs

1. Not available w/narrow chassis.
2. Oxy and 1/2 in. air line not available together.
3. Not available on AJ Models.
4. Tow bar must be shipped separate from unit with 4WS and Dual Fuel or with narrow chassis.
5. Includes engine block heater (Ford) or ether assist (Deutz), battery heater, oil manifold heater, and oil tank heater.
6. Includes console cover, boom wipers, cylinder bellows.

The JLG "1 & 5" Warranty

JLG Industries, Inc. backs our products with our exclusive "1 & 5" Warranty. We provide coverage on all products for one (1) full year, and cover all specified major structural components for five (5) full years. This warranty represents our commitment to superior quality and manufacturing standards and underscores our pledge of being, "The Provider of Choice Worldwide for Access and Material Handling Equipment."

Due to continuous product improvements, we reserve the right to make specification and/or equipment changes without prior notification. This machine meets or exceeds applicable OSHA Regulations in 29 CFR 1910.67, 29 CFR 1926.453, ANSI A92.5-1992, as originally manufactured for intended applications.

JLG Industries, Inc.

1 JLG Drive
McConnellsburg, PA 17233-9553
Telephone 717-485-5161
Toll-free in US 877-JLG-LIFT
Fax 717-485-6417
www.jlg.com

