

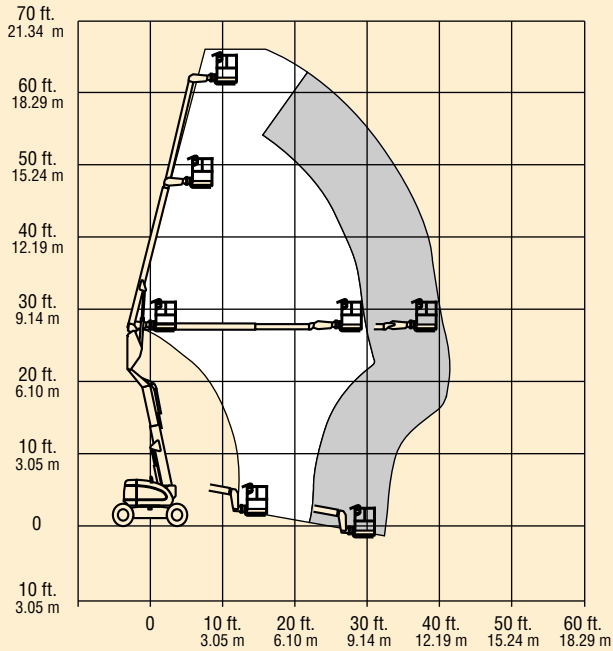
600 SERIES ARTICULATING BOOM LIFTS



600A & 600AJ

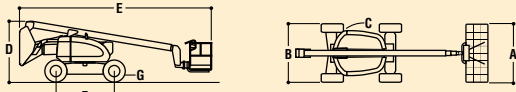


JLG 600A



REACH SPECIFICATIONS

Platform Height	60 ft. (18.29 m)
Horizontal Outreach	39 ft. 7 in. (12.07 m)
Up and Over Clearance	26 ft. 5 in. (8.1 m)
Swing	360 Degrees Continuous
Platform Capacity—Restricted	1000 lbs. (450 kg)
Platform Capacity—Unrestricted	500 lbs. (230 kg)
Platform Rotator	180 Degrees Hydraulic



DIMENSIONAL DATA

A. Platform Size	36 in. x 72 in. (0.91 m x 1.83 m)
B. Overall Width Model 600A	8 ft. (2.44 m)
Overall Width Model 600A narrow	7 ft. (2.13 m)
C. Tailswing (working condition) 600A	Zero
Tailswing (working condition) 600A narrow	5 in. (13 cm)
D. Stowed Height	8 ft. 5 in. (2.56 m)
E. Stowed Length	26 ft. 5 in. (8.05 m)
F. Wheelbase	8 ft. (2.44 m)
G. Ground Clearance	12 in. (30 cm)
Gross Vehicle Weight Model 600A	20,700 lbs. (9,390 kg)
Gross Vehicle Weight Model 600A narrow	23,900 lbs. (10,842 kg)
Max. Ground Bearing Pressure 600A	77 psi (5.5 kg/cm ²)
Max. Ground Bearing Pressure 600A narrow	94 psi (6.6 kg/cm ²)
Max. Tire Load 600A	11,500 lbs. (5,215 kg)
Max. Tire Load 600A narrow	11,600 lbs. (5,261 kg)

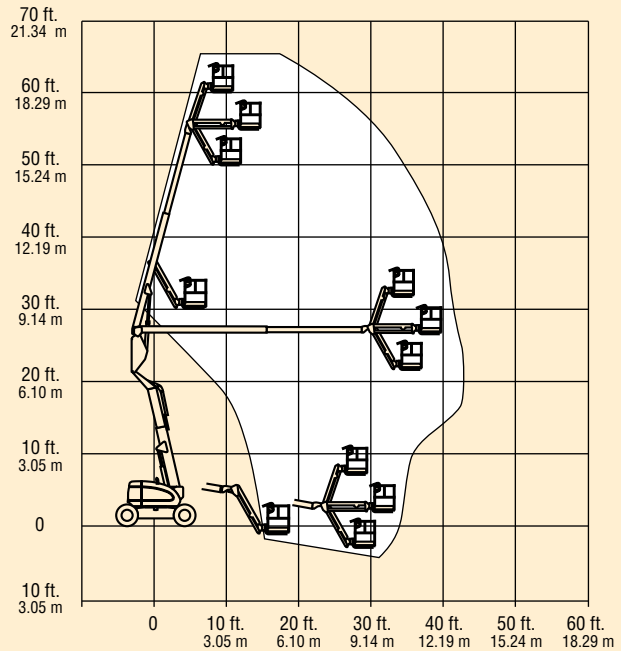
CHASSIS

Drive Speed 600A/600A narrow, 2WD	3.6 MPH (5.8 kph)
Drive Speed 600A 4WD	4.0 MPH (6.4 kph)
Gradeability 2WD 600A, 600A narrow	30%
Gradeability 4WD 600A	45%
Tires 600A	14 x 17.5 Lug Tread
Tires 600A narrow	14 x 17.5 Air Boss
Axle Oscillation (optional)	8 in. (20.4 cm)
Turning Radius, (Inside/Outside)	
600A 2WS	11 ft. 5 in. (3.48 m)/17 ft. 8 in. (5.38 m)
600A 4WS	5 ft. 6 in. (1.68 m)/11 ft. 8 in. (3.56 m)
600A narrow 2WS	12 ft. 2 in. (3.7 m)/16 ft. 6 in. (5.03 m)
600A narrow 4WS	5 ft. 7 in. (1.7 m)/11 ft. 2 in. (3.4 m)

POWER SOURCE

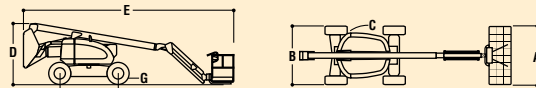
Dual Fuel Engine, Ford LRG-425	82 hp (61 kw)
Diesel Engine, Deutz F4M1011F	65 hp (48 kw)
Diesel Engine, Isuzu 4JB1	67 hp (51 kw)
Diesel Engine, Continental TMD27	67 hp (51 kw)
Fuel Tank Capacity	30 gal. (113.6 L)
Hydraulic Reservoir	30.6 gal. (115.8 L)
Auxiliary Power	12V DC

JLG 600AJ



REACH SPECIFICATIONS

Platform Height	60 ft. (18.29 m)
Horizontal Outreach	39 ft. 9 in. (12.12 m)
Up and Over Clearance	26 ft. 5 in. (8.1 m)
Swing	360 Degrees Continuous
Platform Capacity—Restricted	500 lbs. (230 kg)
Platform Capacity—Unrestricted	500 lbs. (230 kg)
Platform Rotator	180 Degrees Hydraulic
Platform Rotator (Range of Articulation)	130 Degrees (+70, -60)



DIMENSIONAL DATA

A. Platform Size	36 in. x 72 in. (0.91 m x 1.83 m)
B. Overall Width Model 600AJ	8 ft. (2.44 m)
Overall Width Model 600AJ narrow	7 ft. (2.13 m)
C. Tailswing (working condition) 600AJ	Zero
Tailswing (working condition) 600AJ narrow	5 in. (13 cm)
D. Stowed Height	8 ft. 5 in. (2.57 m)
E. Stowed Length	28 ft. 11.5 in. (8.82 m)
F. Wheelbase	8 ft. (2.44 m)
G. Ground Clearance	12 in. (30 cm)
Gross Vehicle Weight Model 600AJ	22,100 lbs. (10,025 kg)
Gross Vehicle Weight Model 600AJ narrow	22,450 lbs. (10,183 kg)
Max. Ground Bearing Pressure 600AJ	68 psi (4.8 kg/cm ²)
Max. Ground Bearing Pressure 600AJ narrow	94 psi (6.6 kg/cm ²)
Max. Tire Load 600AJ	11,240 lbs. (5,098 kg)
Max. Tire Load 600AJ narrow	11,600 lbs. (5,261 kg)

CHASSIS

Drive Speed 600AJ/600AJ narrow, 2WD	3.6 MPH (5.8 kph)
Travel Speed 600AJ 4WD	4.0 MPH (6.4 kph)
Gradeability 2WD 600AJ, 600AJ narrow	30%
Gradeability 4WD	45%
Tires 600AJ	14 x 17.5 Lug Tread
Tires 600AJ narrow	14 x 17.5 Air Boss
Axle Oscillation (optional)	8 in. (20.4 cm)
Turning Radius, (Inside/Outside)	
600AJ 2WS	11 ft. 5 in. (3.48 m)/17 ft. 8 in. (5.38 m)
600AJ 4WS	5 ft. 6 in. (1.68 m)/11 ft. 8 in. (3.56 m)
600AJ narrow 2WS	12 ft. 2 in. (3.71 m)/16 ft. 6 in. (5.03 m)
600AJ narrow 4WS	5 ft. 7 in. (1.7 m)/11 ft. 2 in. (3.4 m)

POWER SOURCE

Dual Fuel Engine, Ford LRG-425	82 hp (61 kw)
Diesel Engine, Deutz F4M1011F	65 hp (48 kw)
Diesel Engine, Isuzu 4JB1	67 hp (51 kw)
Diesel Engine, Continental TMD27	67 hp (51 kw)
Fuel Tank Capacity	30 gal. (113.6 L)
Hydraulic Reservoir	30.6 gal. (115.8 L)
Auxiliary Power	12V DC