

# 800 Series

## ARTICULATING BOOM LIFTS

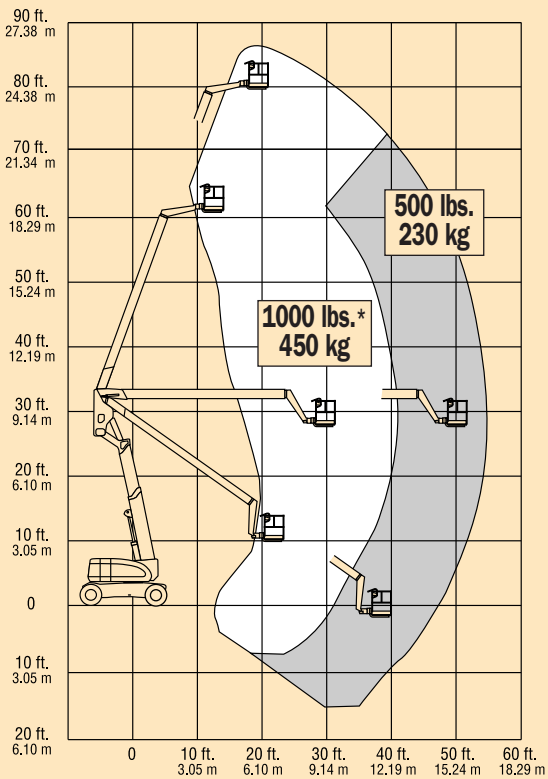


800A  
800AJ

[www.jlg.com](http://www.jlg.com)

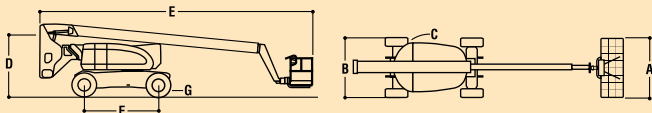
**JLG**®

# JLG MODEL 800A



## REACH SPECIFICATIONS

Platform Height	80 ft. (24.38 m)
Horizontal Reach	53 ft. (16.15 m)
Up and Over Height	32 ft. 1 in. (9.78 m)
Swing	360 Degrees Continuous
Platform Capacity-Restricted	500/1000 lbs.* (230 kg/450 kg)
Platform Capacity-Unrestricted	500 lbs. (230 kg)
Platform Rotator	180 Degrees Hydraulic



## DIMENSIONAL DATA

A. Platform Size	36 in. x 72 in. (0.91 m x 1.83 m)
B. Overall Width	8 ft. (2.44 m)
C. Tailswing	2 ft. 6 in. (76 cm)
D. Stowed Height	9 ft. 10 in. (3.0 m)
E. Stowed Length	36 ft. 11 in. (11.25 m)
F. Wheel Base	10 ft. (3.05 m)
G. Ground Clearance	12 in. (30 cm)
Gross Vehicle Weight**	34,200 lbs. (15,513 kg)
Max. Ground Bearing Pressure	76 psi (5.3 kg/cm <sup>2</sup> )

## CHASSIS

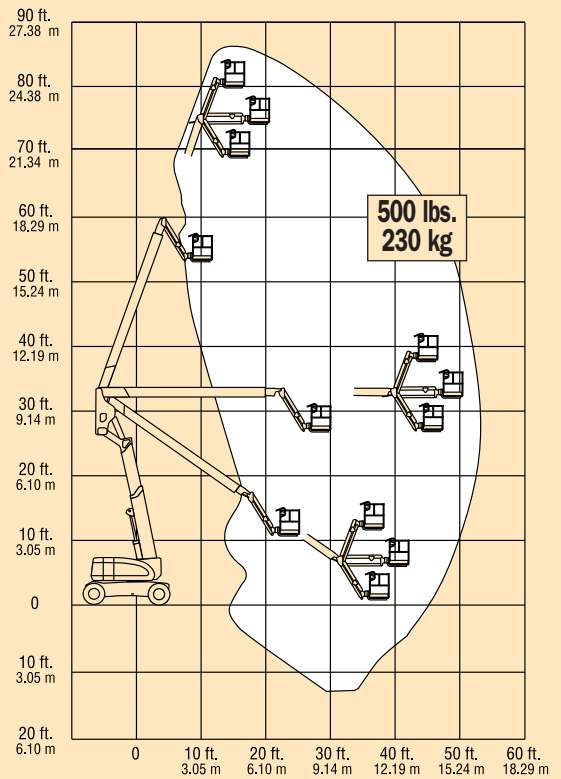
Drive Speed 2WD or 4WD	3.0 MPH (4.8 kph)
Gradeability 2WD	30%
Gradeability 4WD	45%
Turning Radius, (Inside/Outside)	
800A 2WS	12 ft./22 ft. 6 in. (3.66 m/6.86 m)
800A 4WS	7 ft./14 ft. 6 in. (2.13 m/4.42 m)
Tires/Type-2WD	385/65 x 19.5 Lug Tread
Tires/Type-4WD	445/55 x 19.5 Wide Lug Tread

## POWER SOURCE

Dual Fuel Engine, Ford LRG-425	82 hp (61 kW)
Diesel Engine, Deutz F4M1011F	65 hp (48 kW)
Fuel Tank Capacity	39 gal. (147.6 L)
Hydraulic Reservoir	40 gal. (151.4 L)
Auxiliary Power	12V DC

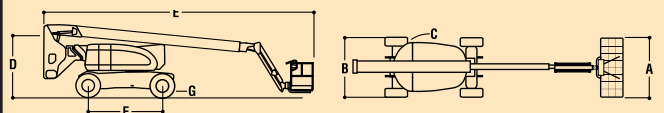
\*Except CE rating. \*\*Certain options or country standards will increase vehicle weight.

# JLG MODEL 800AJ



## REACH SPECIFICATIONS

Platform Height	80 ft. (24.38 m)
Horizontal Reach	51 ft. 10 in. (15.8 m)
Up and Over Height	32 ft. 1 in. (9.78 m)
Swing	360 Degrees Continuous
Platform Capacity-Unrestricted	500 lbs. (230 kg)
Platform Rotator	180 Degrees Hydraulic
Jib (Range of Articulation)	130 Degrees (+70, -60)



## DIMENSIONAL DATA

A. Platform Size	36 in. x 72 in. (0.91 m x 1.83 m)
B. Overall Width	8 ft. (2.44 m)
C. Tailswing	2 ft. 6 in. (76 cm)
D. Stowed Height	9 ft. 10 in. (3.0 m)
E. Stowed Length	36 ft. 6 in. (11.13 m)
F. Wheel Base	10 ft. (3.05 m)
G. Ground Clearance	12 in. (30 cm)
Gross Vehicle Weight*	34,200 lbs. (15,513 kg)
Max. Ground Bearing Pressure	76 psi (5.3 kg/cm <sup>2</sup> )

## CHASSIS

Drive Speed 2WD or 4WD	3.0 MPH (4.8 kph)
Gradeability 2WD	30%
Gradeability 4WD	45%
Turning Radius, (Inside/Outside)	
800A 2WS	12 ft./22 ft. 6 in. (3.66 m/6.86 m)
800A 4WS	7 ft./14 ft. 6 in. (2.13 m/4.42 m)
Tires/Type-2WD	385/65 x 19.5 Lug Tread
Tires/Type-4WD	445/55 x 19.5 Wide Lug Tread

## POWER SOURCE

Dual Fuel Engine, Ford LRG-425	82 hp (61 kW)
Diesel Engine, Deutz F4M1011F	65 hp (48 kW)
Fuel Tank Capacity	39 gal. (147.6 L)
Hydraulic Reservoir	40 gal. (151.4 L)
Auxiliary Power	12V DC

\*Certain options or country standards will increase vehicle weight.